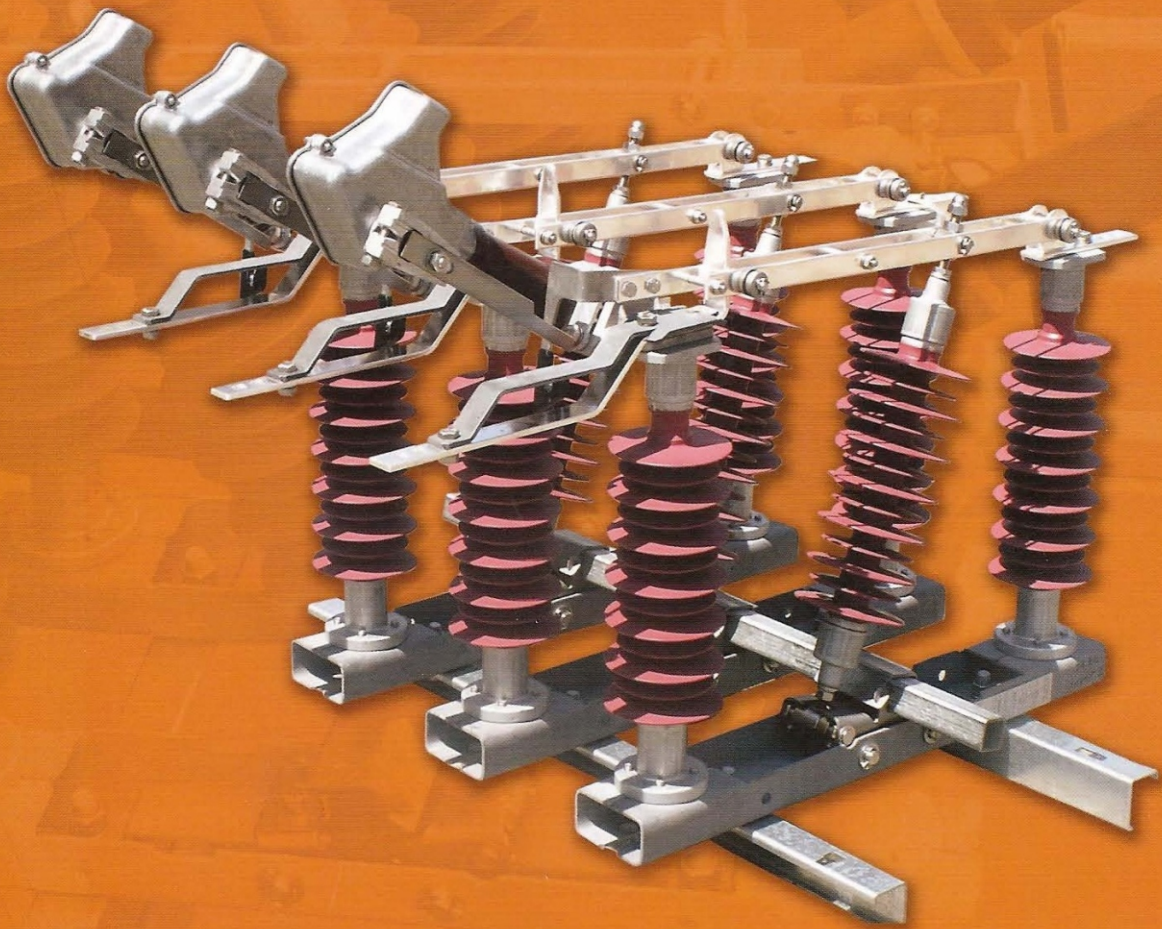


OUTDOOR SWITCH DISCONNECTOR TRLF-1



P O S I T I V E E N E R G Y



Suparule SA (Pty) Ltd.
26 Simba St. Unit 1&2
Sebenza
Edenvale
Gauteng
South Africa
Tel: +27(0)114529800
Fax: +27(0)114529828
e-mail: sales@suparule.co.za
Web: www.suparule.co.za

OUTDOOR SWITCH DISCONNECTOR TRLF-1

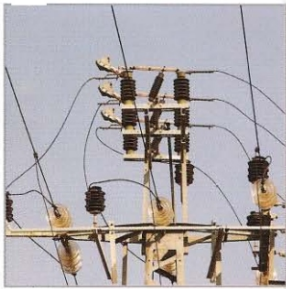
These sturdy switch disconnectors perform reliably under severe operating conditions in thousands of locations around the world. They are designed and built to withstand high mechanical and electrical stresses, and all components are made of non-corroding materials. Low-weight insulators made of composite materials are vandal-proof, flexible and non-breakable. These on-load switches comply with the most severe operating and safety requirements, are easy to install, and provide absolute reliability in function and

performance. They can be installed horizontally or vertically.

Switch disconnector TRLF-1 can interrupt its full operating current (rated current). When the switch is opened the current flow is transferred to the arcing chambers so that the main contacts open without arcing. The switches are fitted with short-circuit-proof current blades that support a continuous current of 800 amps. The switch itself supports a breaking current of 400 or 630 amps.

Flexible mounting

Switch disconnector Type TRLF-1 is designed for mounting flexibility. It permits any required phase distance by clamping the phases to the pole arm, and supports a variety of arrangements, including single - or multi-phase, one phase above the other, or side by side. It can be mounted on metal, concrete or wooden poles. A number of hand operating mechanisms are available to meet different needs.



Motor operating mechanism

Our motor operating mechanism is assisted by a quick-make device that reduces arcing time. As a result, contacts remain in good condition after two closings under full short-circuit current.



Distributor:

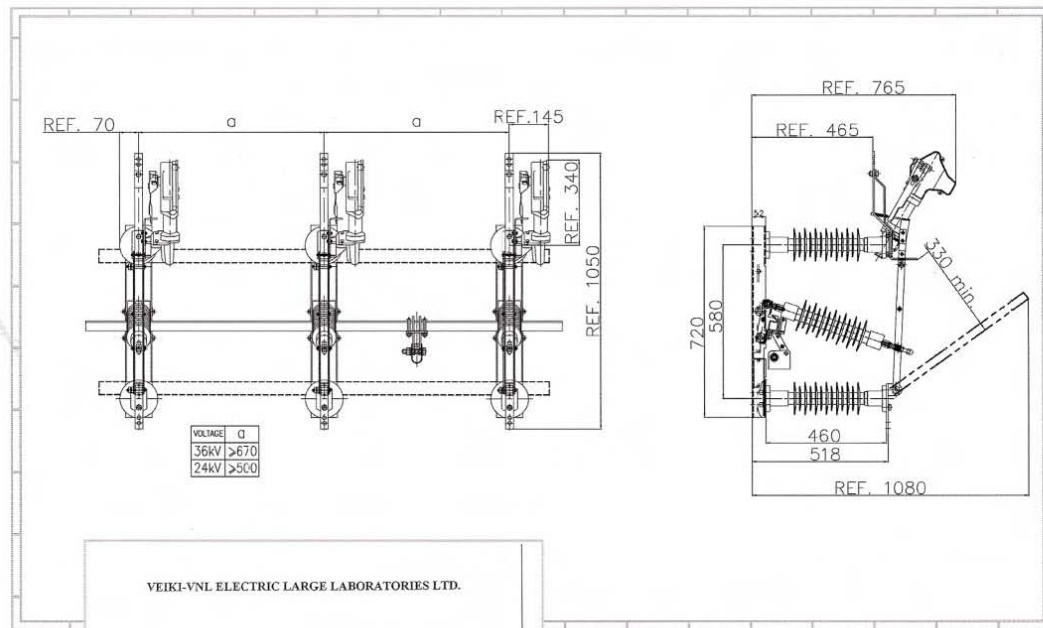
Suparule SA (Pty) Ltd.
26 Simba St. Unit 1&2
Sebenza
Edenvale
Gauteng
South Africa
Tel: +27(0)114529800
Fax: +27(0)114529828
e-mail: sales@suparule.co.za
Web: www.suparule.co.za

Insulators

The composite insulators are flexible and vandal proof and their fiberglass core withstands full short-circuit forces.

Maintenance free

The switch is completely maintenance-free throughout its long operating life. Switch materials are non-corroding. The operation of the arcing chamber's internal mechanism is human independent. Arc quenching is based on the gas-generation principle.



VEIKI-VNL ELECTRIC LARGE LABORATORIES LTD.



No. 4369 /VNL

Test report

Making and breaking tests and short-time and peak withstand current test on high-voltage switch type TRLF 1/24/36/400/MR

01st September 2005

VEIKI-VNL Villamos Nagyberendezések
Kísérleti Felépítései Társaság
1158 Budapest, Vaszgolyó u. 2-4.



TUV accreditation of VEIKI-VNL Ltd.

refers to the test activities registered by TAP (Hungarian Accreditation Board) under No. NAT-1-1251/2004

H-1158 Budapest, Vaszgolyó u. 2-4.
E-mail: vnl@vnl.hu

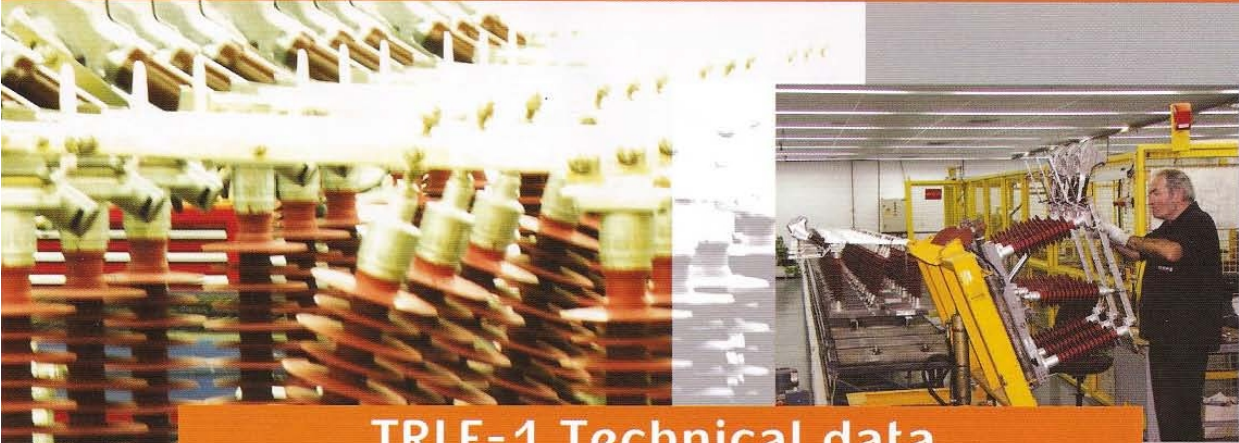
Phone: +36.1.417 3157, Fax: +36.1.417 3163
www.vnl.hu

Distributor:



Suparule SA (Pty) Ltd.
26 Simba St. Unit 1&2
Sebenza
Edenvale
Gauteng
South Africa
Tel: +27(0)114529800
Fax: +27(0)114529828
e-mail: sales@suparule.co.za
Web: www.suparule.co.za

P O S I T I V E E N E R G Y



TRLF-1 Technical data

Class E1 General Purpose Switch			1/12	1/24	1/36
Rated voltage	U_R	kV	12	24	36
Rated frequency	f_r	Hz	50/60	50/60	50/60
Standard impulse withstand voltage to earth	U_w	kV	75	125	170
Between poles across isolation distance	1.2/50 μ s full wave	kV	85	145	195
Power frequency test voltage to earth	U_d 1 min	kV	28	50	70
Between poles across isolation distance		kV	32	60	80
Continuous carrying current	I_{TH}	A	800	800	800
Rated short time current 1s	I_K	kA	20	20	20
Rated short time current 3s	I_K	kA	16	16	16
Rated peak withstand current	I_{dyn}	kA	50	50	50
Rated short-circuit making current	I_{ma}	kA	50	31.5	20
Creepage distance of insulators		mm	372	560	1190
Rated breaking current	I_R, I_1	A	630	630	400
Closed loop breaking current	I_{2a}	A	400	400	400
Maximum breaking current (3 operations)	I_{L3}	A	900	900	630
Cable charging breaking current	I_{4a}	A	10	16	20
Line charging breaking current	I_{4b}	A	1	1.5	2
200 operations p.f. 0.7 on new arcing chambers		A	32	32	20
No load operation	C/O		1000	1000	1000



Distributor:

Suparule SA (Pty) Ltd.
 26 Simba St. Unit 1&2
 Sebenza
 Edenvale
 Gauteng
 South Africa
 Tel: +27(0)114529800
 Fax: +27(0)114529828
 e-mail: sales@suparule.co.za
 Web: www.suparule.co.za